



Duplex Stainless Steel CD4MCu

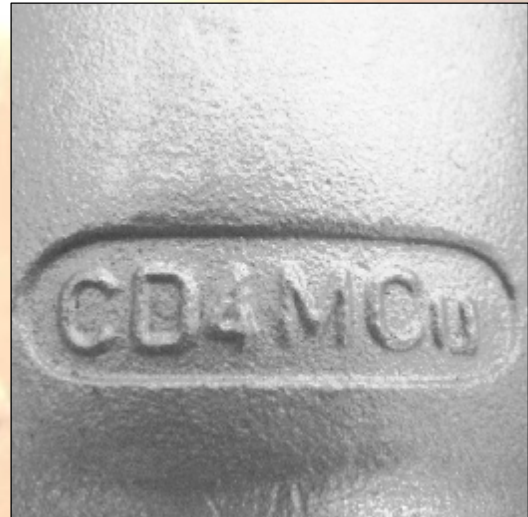
CD4MCu is a Fe-Cr-Ni-Mo duplex stainless steel, with greater corrosive resistance than standard 18-8 Cr-Ni and 18-14-2/18-14-3 Cr-Ni-Mo stainless steel parts.

Casting Material Standard: ASTM A890 Grade 1A; Type 25Cr-5Ni-Mo-Cu; UNS J93370; ACI CD4MCu; Z3CNUD26•05M; SS2605

WWW.CASTINGQUALITY.COM

CD4MCu(SS2605) Chemical requirements:

Carbon, max 0.04;
Manganese, max 1.00
Silicon, max 1.00
Phosphorus, max 0.04
Sulfur, max 0.04
Chromium 24.5-26.5
Nickel 4.75-6.0
Molybdenum 1.17-2.25
Copper 2.75-3.25



CD4MCu(SS2605) Tensile Requirements:

Tensile Strength, min 100ksi [690Mpa]; Yield strength, min 70Ksi [485Mpa]; Elongation 16%

CD4MCu(SS2605) Heat treatment process:

Heat to 1900°F [1040°C] minimum, hold for sufficient time to heat casting uniformly to temperature, quench in water or rapid cool by other means.

CD4MCu(SS2605) Hardness: HB300

CD4MCu is widely used in pump industry, especially in abrasive applications, such as pump casing and pump impeller. And CD4MCu won't pit like regular stainless steel, has a better stress/corrosive cracking resistance than standard stainless, and higher strength than standard stainless steel. And compared with regular cast iron material, it is much more resistant to corrosion and much stronger.

CD4MCu BENEFITS

- Corrosion and pitting resistance
- Better for abrasive applications
- Higher strength than standard stainless steel
- Improved ductility and weldability
- Better resistance to embrittlement

SERVICE IN QINGDAO CASTING QUALITY INDUSTRIAL

- I SAND CASTING
- I INVESTMENT CASTING
- I SHELL CASTING
- I PERMANENT MOLD CASTING
- I CNC MACHINING
- I CAD/CAM DESIGN